

Data Book

January 2007

Budget Office

Introduction

The Fort Lewis College Data Book is a compilation of financial information and graphs which can be used to show history and trends in many areas at Fort Lewis College. Assembling the information in a single document aids in dissemination of financial information about the College. The Data Book is updated and reissued each Winter.

Information contained in the following tables was prepared by:

Pam Davis, Budget Analyst

Bryan Eisenbraun, Budget Analyst

Michele Peterson, Director of Budgets

Jessica Sergeant, Assistant Director of Institutional Research

Amy Yeager, Director of Institutional Research

The Data Book is divided into three sections: *Financial Information, Student Information* and *Staffing Information* . Sources of information are listed in the *Appendix* . Additional detail may be obtained by contacting the Budget Office.

Suggestions for additional information to be included in future editions of the Data Book should be directed to the Budget Office.

**Michele Peterson
Director of Budgets**

Table of Contents

Financial Information

Education & General Revenue Sources ~ Actual _____	1
Education & General Expenditures ~ Actual _____	2
Native American Tuition Waivers and Headcount _____	3
Tuition Rates ~ Ten-Year History _____	4
Tuition Rates & Fee Rates ~ Comparison with Selected Colorado Institutions _____	5
Mandatory Student Fees ~ Ten-Year History _____	6
Mandatory Student Fee Revenue ~ Five-Year History _____	7
Room and Board Rates ~ Ten-Year History _____	8
Room and Board Rates ~ Comparison with Selected Colorado Institutions _____	9
Grant Activity _____	10

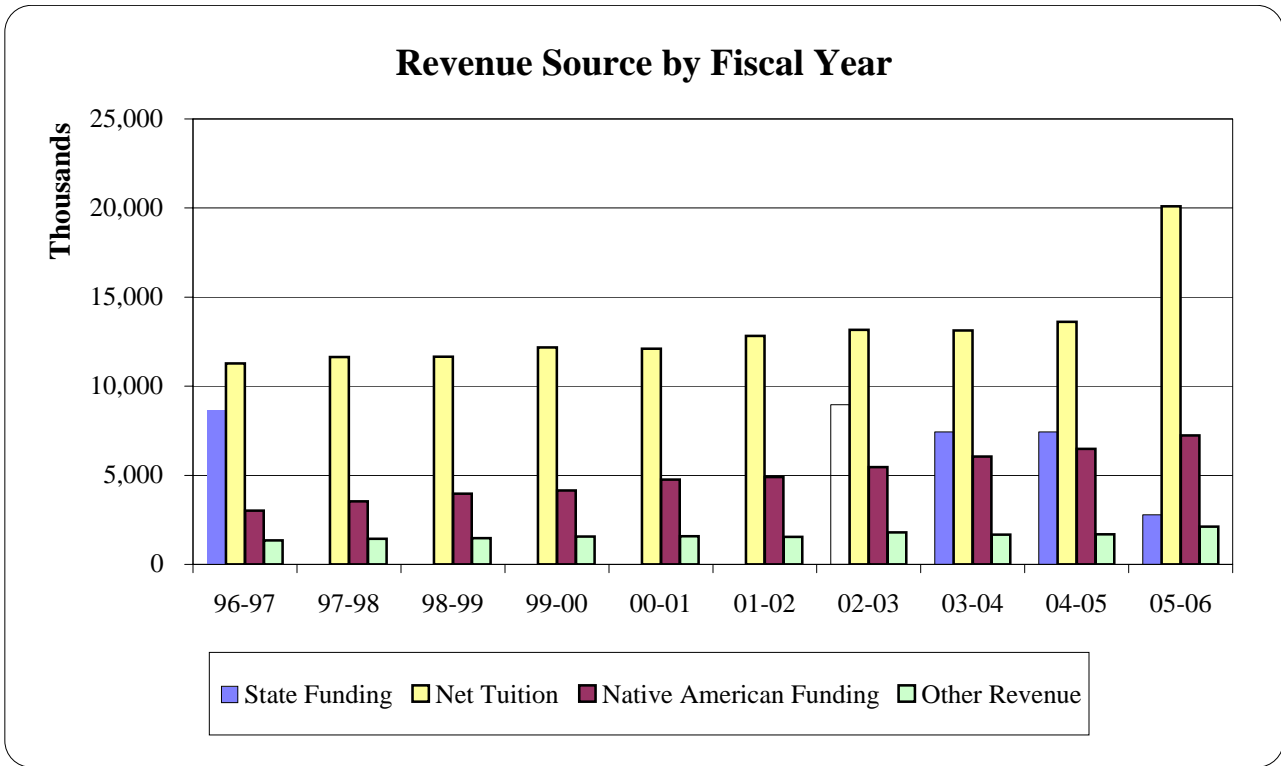
Student Information

Fall Headcount and Fiscal Year Full-Time Equivalent (FTE) _____	11
Student Residency by State _____	12
Students by Ethnic Origin _____	13
Freshman Retention Rates _____	14
Graduation Rates _____	15

Staffing Information

Education and General Salary Distribution _____	16
Faculty Salary Increases Compared to Consumer Price Index _____	17
Faculty Full-Time Equivalent _____	18
Student Full-Time Equivalent _____	19
Student Faculty Ratio _____	20
Faculty by Gender and Rank ~ Five-Year Comparison _____	21
The Delaware Study _____	22

Appendix ~ Sources of Information _____	23
--	----



Significance:

This graph shows the various sources of Education & General Revenue for the past ten fiscal years.

Current Status:

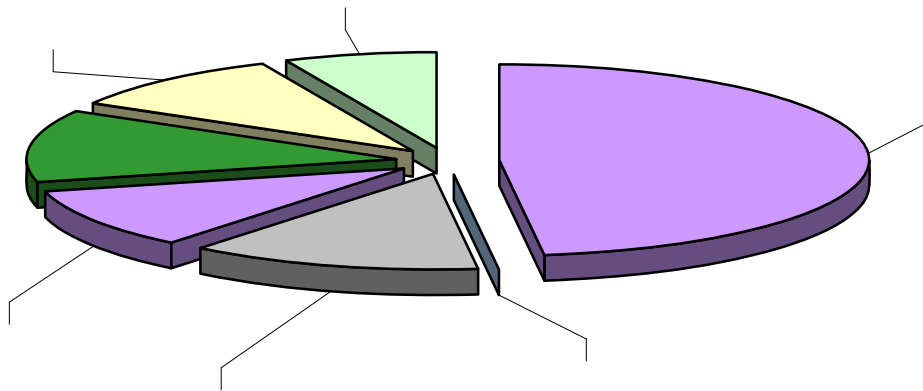
In the 2005-06 fiscal year, the funding mechanism for higher education in the State of Colorado changed. In the past years, higher education received state funds through an appropriation. With the implementation of the College Opportunity Fund (COF) program in FY 2005-06, the previously funded amounts were divided into two pots of funding, stipends and Fee for Service.

The COF program provides stipend directly to students and the students use those stipends to pay tuition. As a result of this program, tuition revenue increased by the stipend amount.

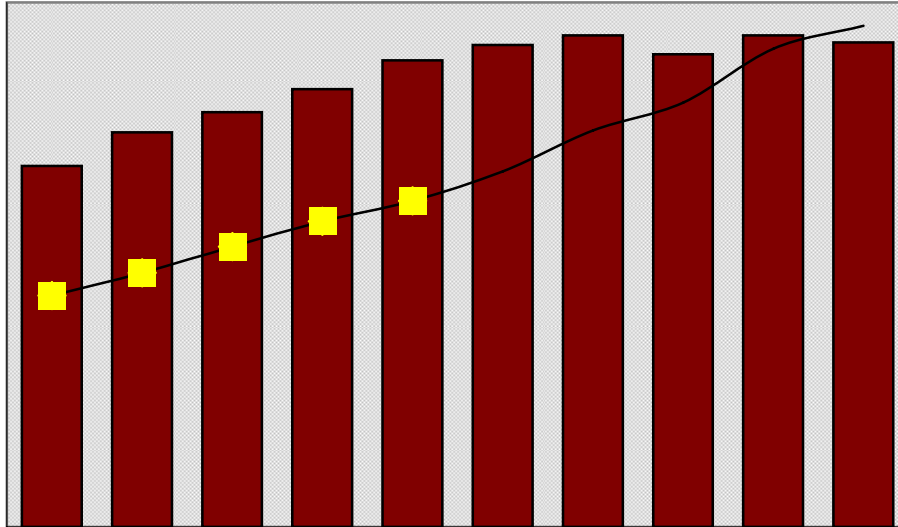
In the charts above, both the increase in tuition revenue and the decrease in State funding are caused by this shift in funding methodologies.

Native American Appropriations have doubled in the past ten years due to an increase in Native American students coupled with an increase in tuition rates.

Education & General Expenditures ~ Actual



Native American Tuition Waivers and Headcount



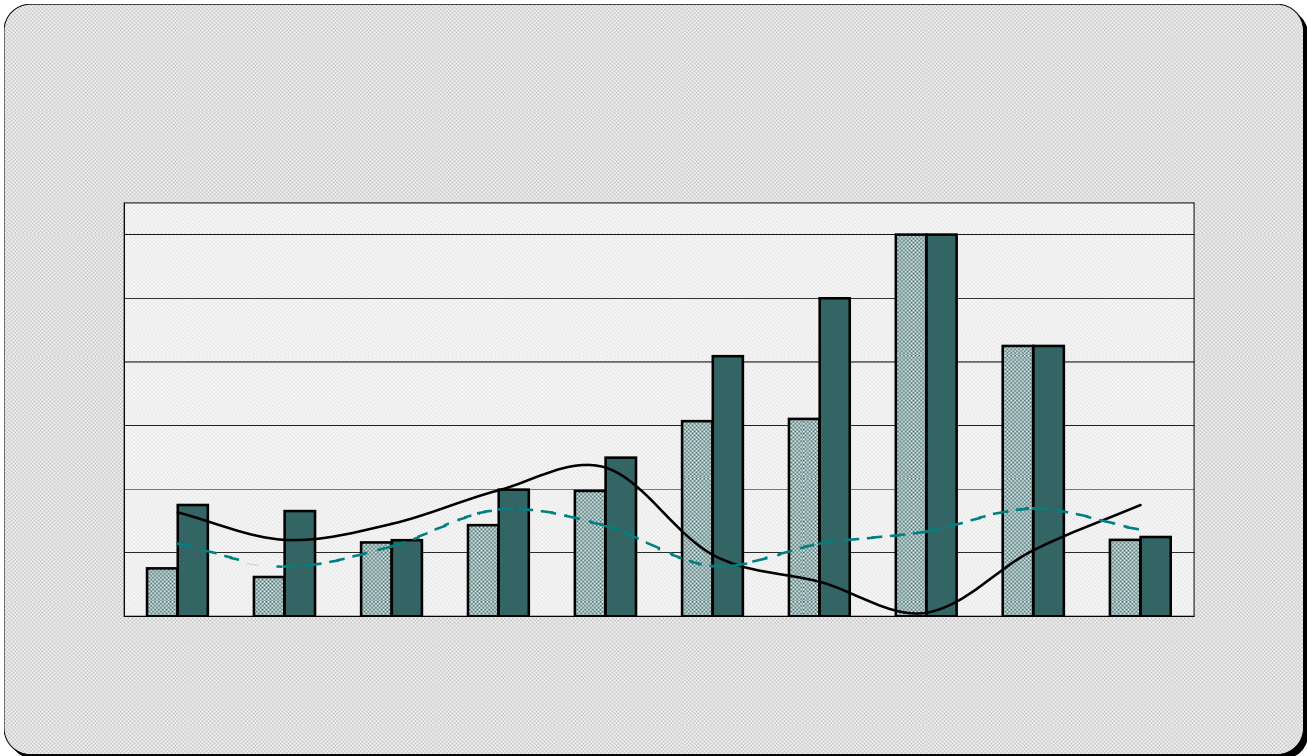
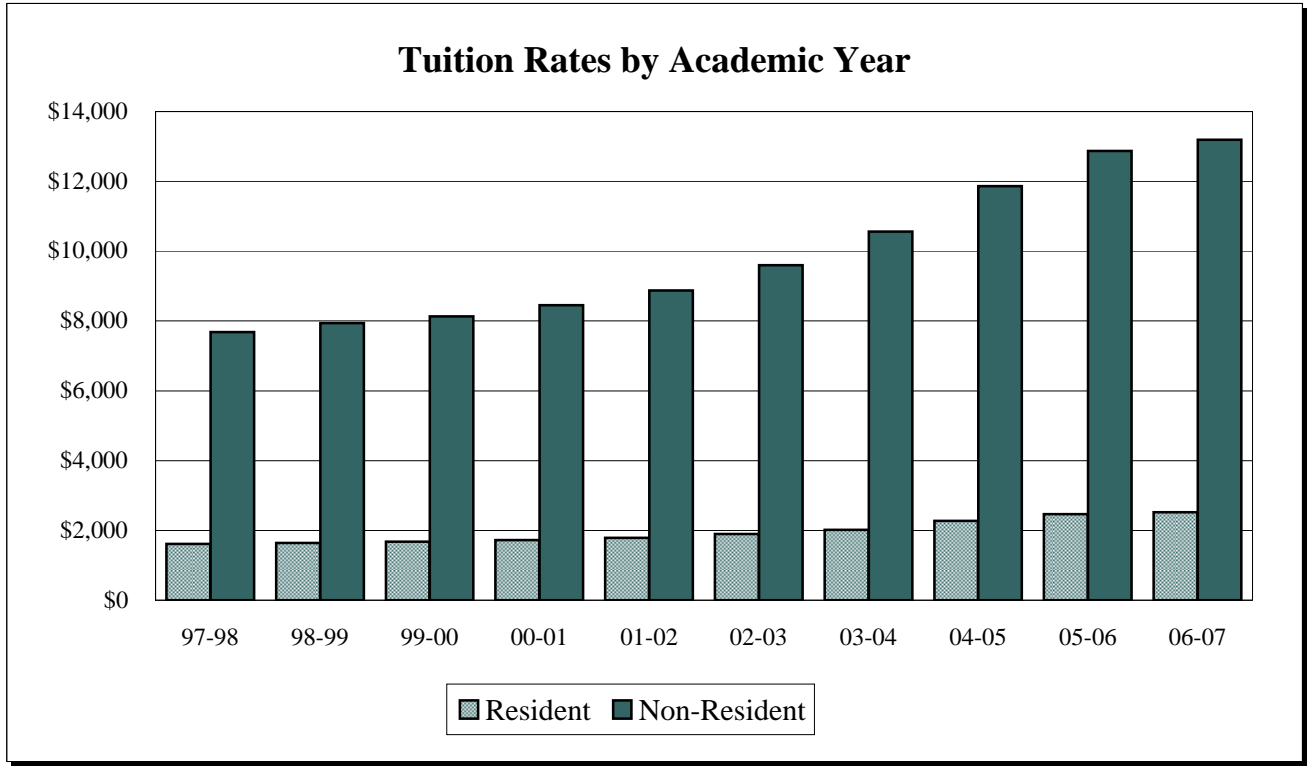
Significance:

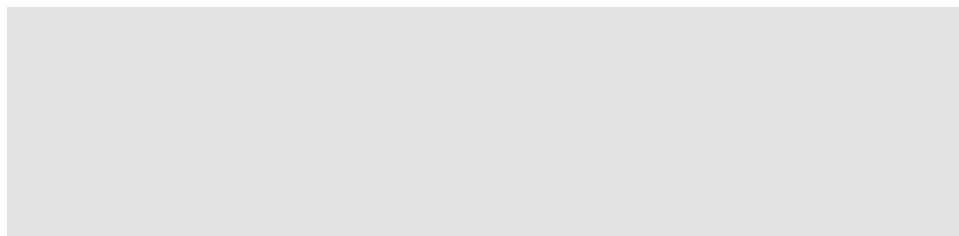
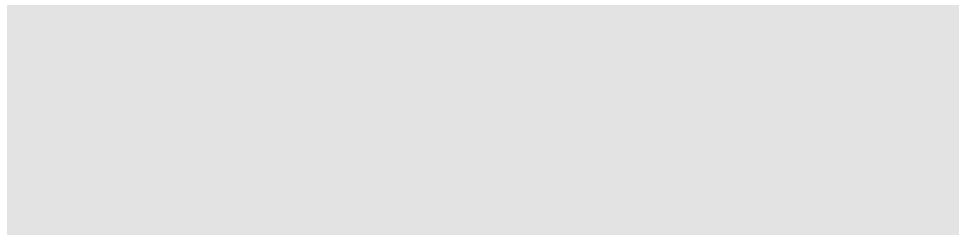
The original charter of Fort Lewis College, adopted in 1911, contained a clause stating that "Indian pupils shall at all times be admitted to such school free of charge of tuition . . ." Fort Lewis College continues to honor this tradition of providing tuition-free education for Native American students. These tuition waivers are funded by the State of Colorado.

Current Status:

Fall Headcount of Native American students receiving tuition waivers and the amount of tuition waived has increased steadily over the past ten years. The Fall headcount of Native American receiving the tuition waiver students decreased slightly to 693 in FY 05-06 after the jump back up to 703 the prior year. However, income from tuition waivers has continued to rise due to the increase in tuition rates.

Tuition Rates ~ Ten-Year History



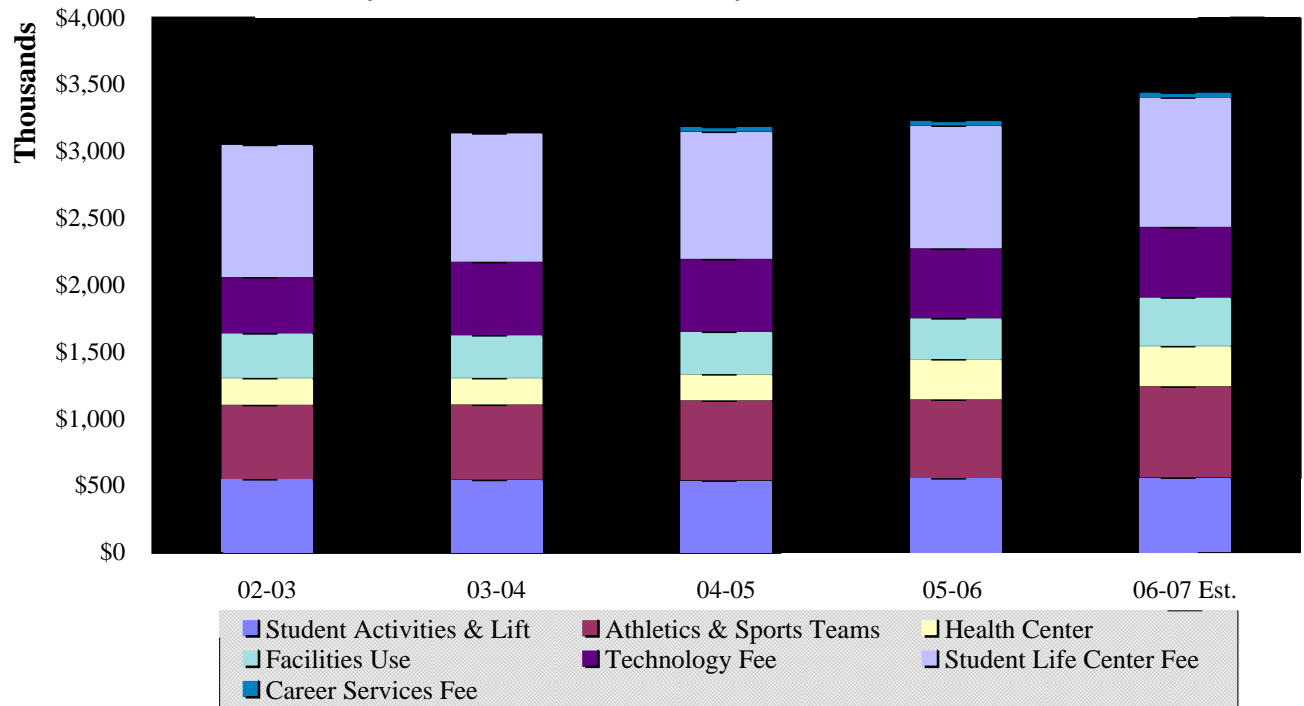


Mandatory Student Fees ~ Ten-Year History

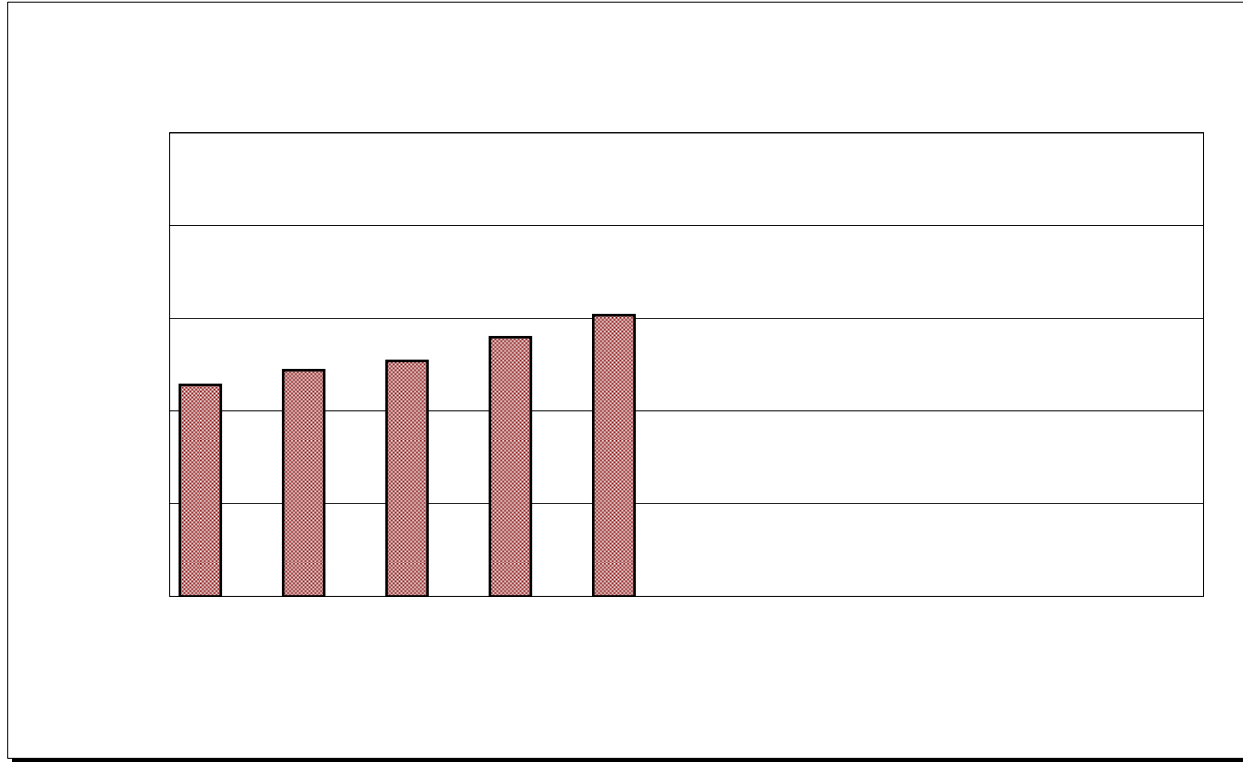
	<u>FY 94-95</u>	<u>03-04</u>	<u>Change</u>	<u>% Change</u>
Activities & Lift	#REF!	134	#REF!	#REF!
Athletics & Teams	#REF!	140	#REF!	#REF!
Health Center	#REF!	49	#REF!	#REF!
Facility Use	#REF!	78	#REF!	#REF!
Technology Fee	#REF!	136	#REF!	
Student Life Center Fee	#REF!	232	#REF!	
Total	#REF!	769	#REF!	#REF!

	<u>Stud. Act. & Lift</u>	<u>Athletics</u>	<u>Health Center</u>	<u>Facilities Use</u>	<u>Technology Fee</u>	<u>Student Life Center</u>	<u>Career Services</u>	<u>Total</u>
FY 02-03	547,332	557,243	199,310	335,790	420,007	990,070	-	3,049,752
FY 06-07 Est.	559,134	683,781	301,251	362,664	527,458	970,194	35,197	3,439,679
\$ Increase	11,802	126,538	101,941	26,874	107,451			

Mandatory Student Fee Revenue by Fiscal Year



Room and Board Rates ~ Ten-Year History



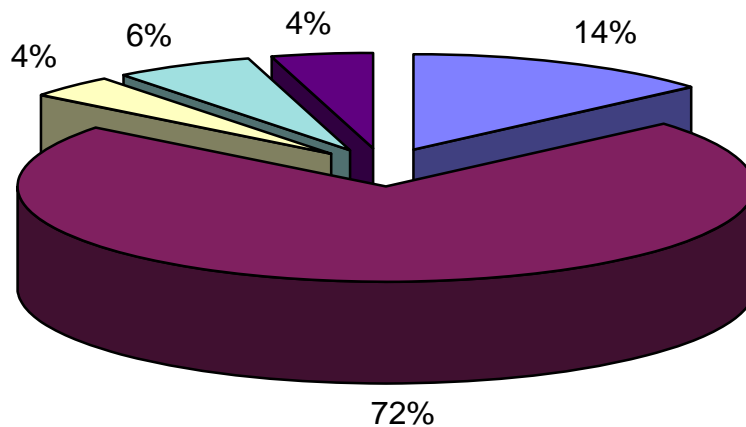
Room and Board Rates ~ Comparison with Selected Colorado Institutions



Grant Activity

	Fiscal Year				
	<u>2001-02</u>	<u>2002-03</u>	<u>2003-04</u>	<u>2004-05</u>	<u>2005-06</u>
Grants Received					
Federal Pass Through	\$ 299,647	\$ 371,626	\$ 370,979	\$ 343,379	\$ 452,232
Federal Direct (excluding financial aid)	1,297,693	2,522,278	2,578,799	2,297,590	2,405,272
State	388,606	374,649	141,974	321,767	125,870
Private (excl scholarship donations)	118,497	174,543	98,935	382,246	210,789
Local	109,220	83,325	135,093	71,548	145,688
Total	<u>\$ 2,213,663</u>	<u>\$ 3,526,421</u>	<u>3,325,780</u>	<u>3,416,530</u>	<u>3,339,851</u>
Indirect Cost Recoveries					
Federal	\$ 90,765	\$ 306,221	162,353	168,691	168,742
State	908	266	-	28,280	2,707
Private	1,799	19,791	4,604	5,116	2,549
Total	<u>\$ 93,472</u>	<u>\$ 326,277</u>	<u>\$ 166,957</u>	<u>\$ 202,087</u>	<u>\$ 173,998</u>

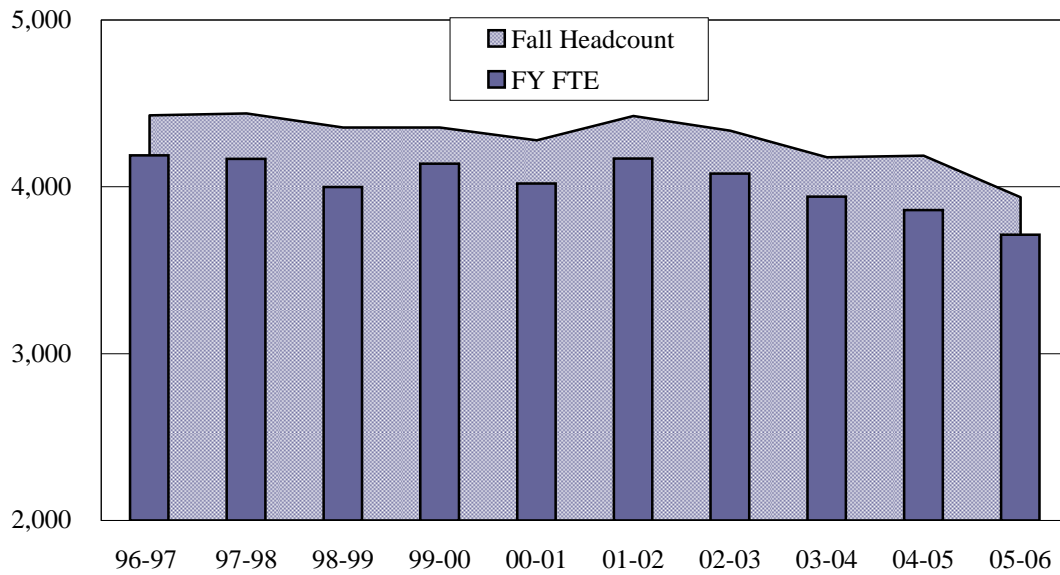
Grant Activity FY 2005-06



■ Federal Pass Through
 ■ Federal Direct
 ■ State
 ■ Private
 ■ Local

Fall Headcount & Fiscal Year Full-Time Equivalent (FTE)

Fall Headcount & Fiscal Year Student FTE Comparison



Significance:



Students by Ethnic Origin

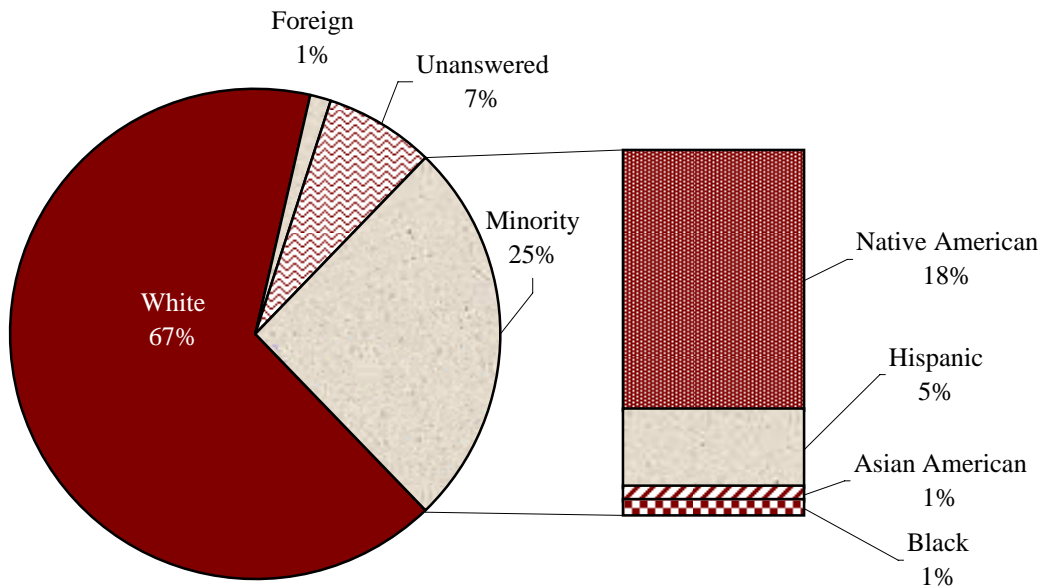
Significance:

Studying the breakdown of students by ethnicity is important because Fort Lewis College has such a rich cultural heritage and has been recognized as one of the most diverse colleges in the nation.

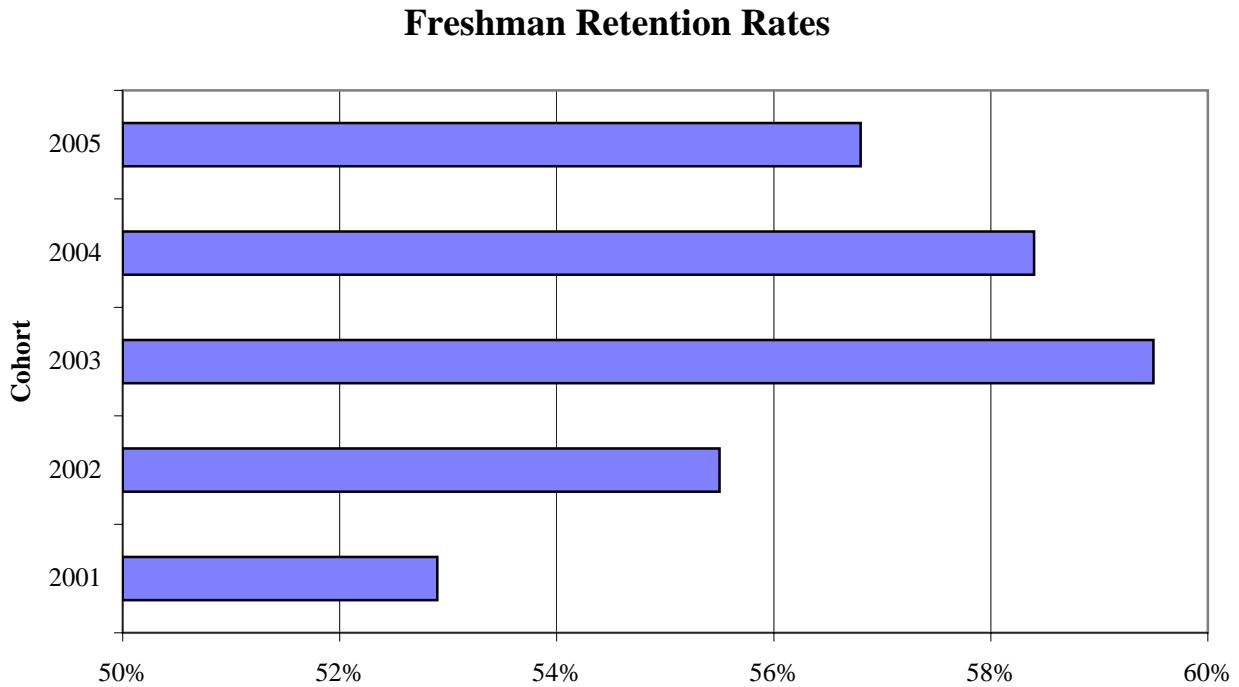
Current Status:

Over the past ten years, the number of minority students has increased by 8%, with most of that growth resulting from an increase in Native American students. In the Fall of 1994, Native American students represented 12% of the student population, compared with 18% in Fall 2006.

**Percentage of Students by Ethnic Origin
Fall 2006**



Freshman Retention Rates



A cohort represents all first-time, full-time freshman students who started in the Fall of the year shown. The retention rate shown represents the portion of those students that returned to school the following Fall semester. The retention rate is the percentage of freshmen who continue into their sophomore year at Fort Lewis College.

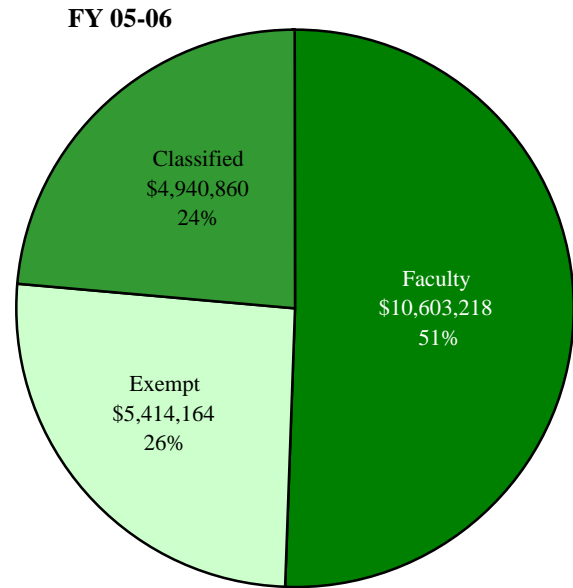
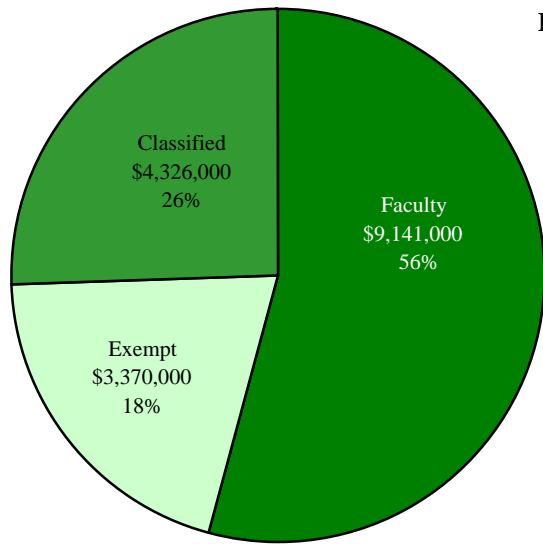
Significance:

Freshman retention rates represent a commonly accepted measure of success for first-time, full-time freshman students, and have historically been included in performance measures.

Current Status:

The College has invested significant efforts over the past few years in developing programs to increase freshman retention and there is evidence of this in the increase from 2001 through 2003. However in 2004 the retention rate dropped by 1% and another 1.6% in 2005.

Education and General Salary Distribution History



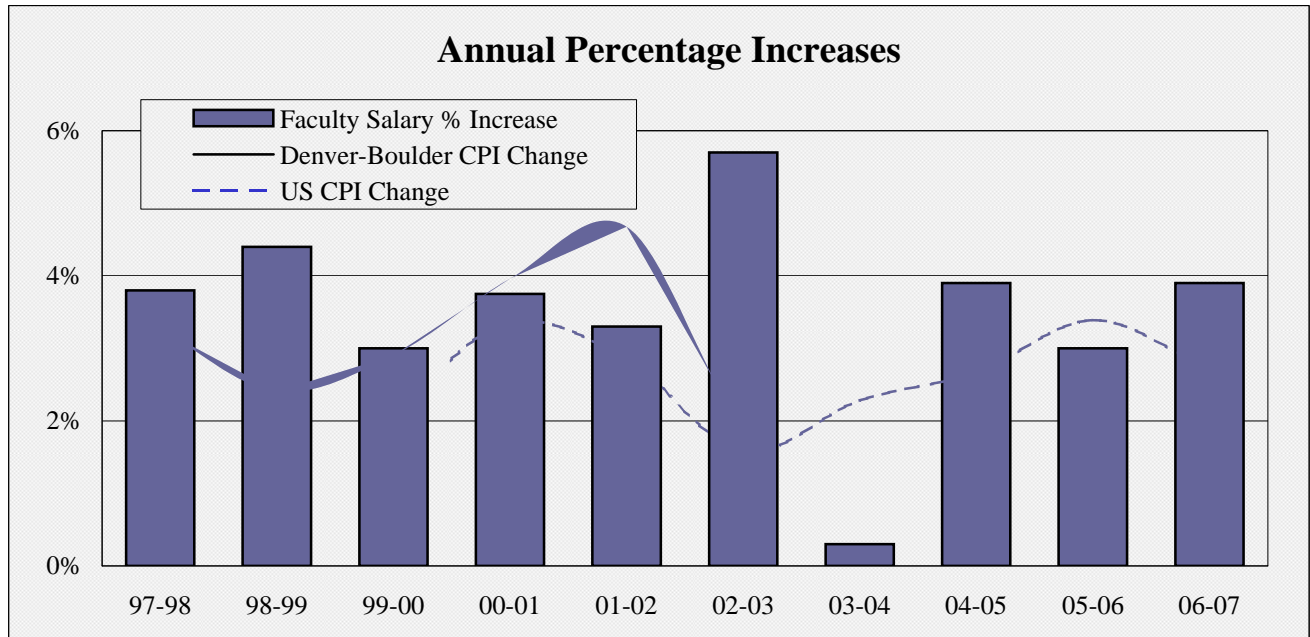
Significance:

Higher Education is a labor intensive enterprise, and studying the distribution of salary expenses by employee group helps show shifts in the relative position of each category of employee. Seventy-six percent of the current year budget is dedicated to salary and benefit compensation costs.

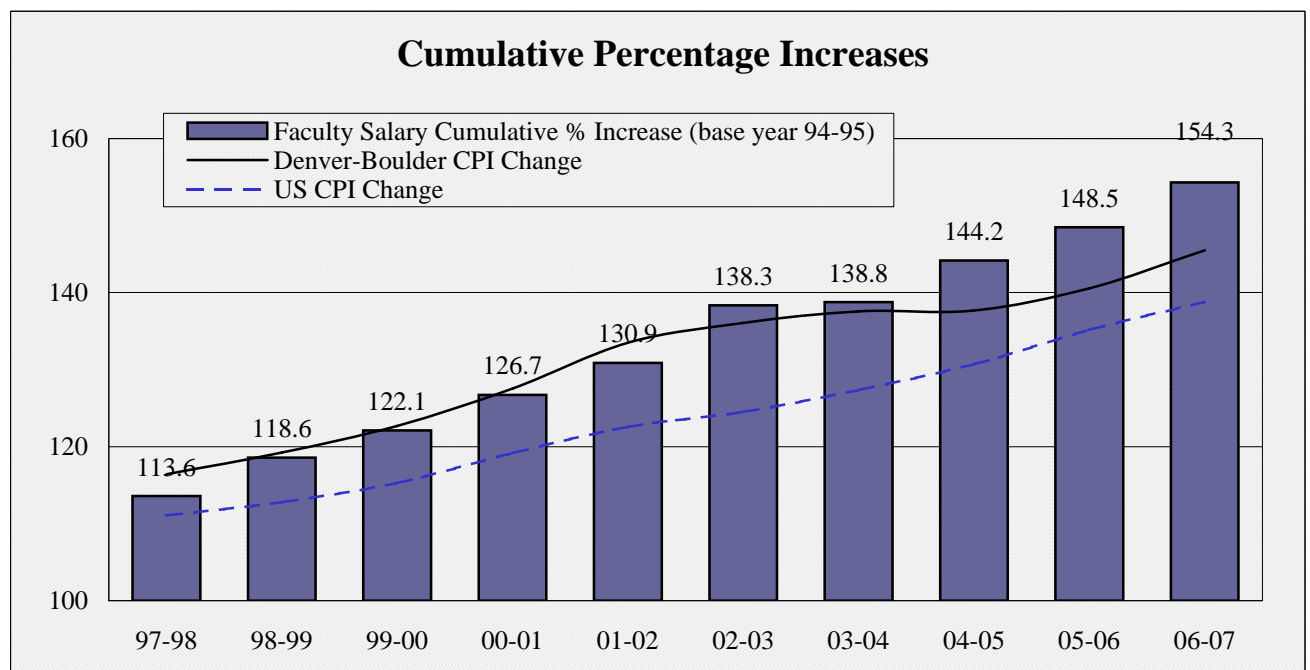
Current Status:

Over the past ten years, the percentage of faculty series has decreased from 56% to 51% of all salaries, whereas the exempt staff share has risen from 18% to 26% and the classified share has dropped from 26% to 24%.

Faculty Salary Increases Compared to CPI

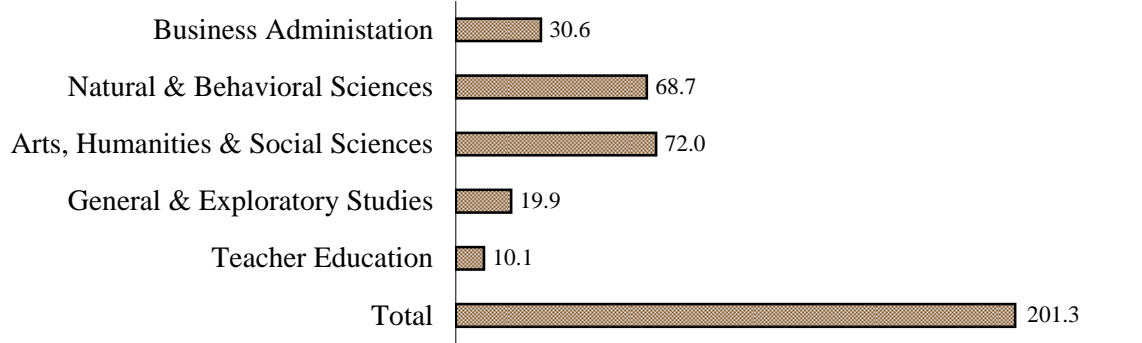


Note: The Budget Office prepares an annual Faculty Salary Study that compares FLC faculty salary averages to national averages, COPLAC (Council of Public Liberal Arts Colleges) institutions, and similar Colorado institutions. Please contact the Budget Office for a copy of this study.

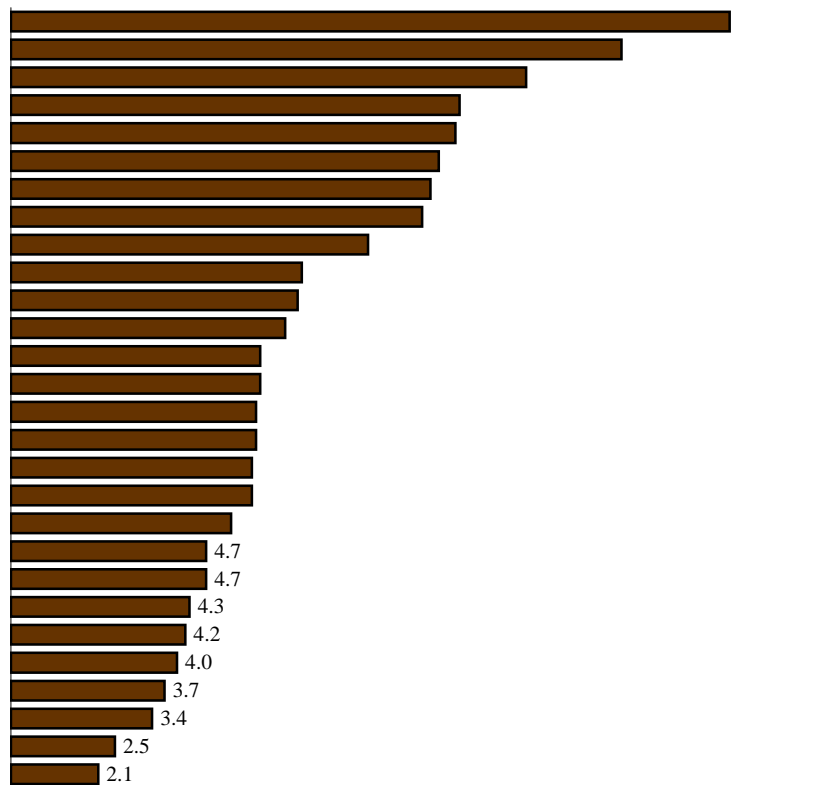


Faculty Full-Time Equivalent

Faculty FTE by School - FY 05-06

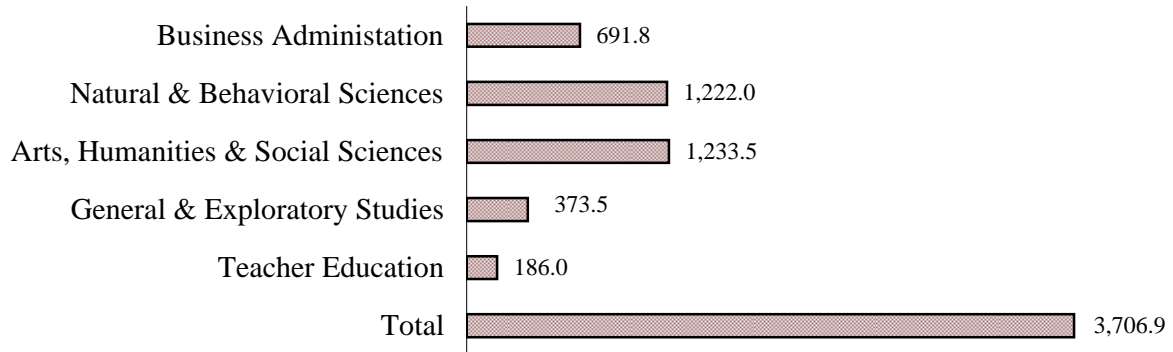


Faculty FTE by Discipline ~ FY 05-06

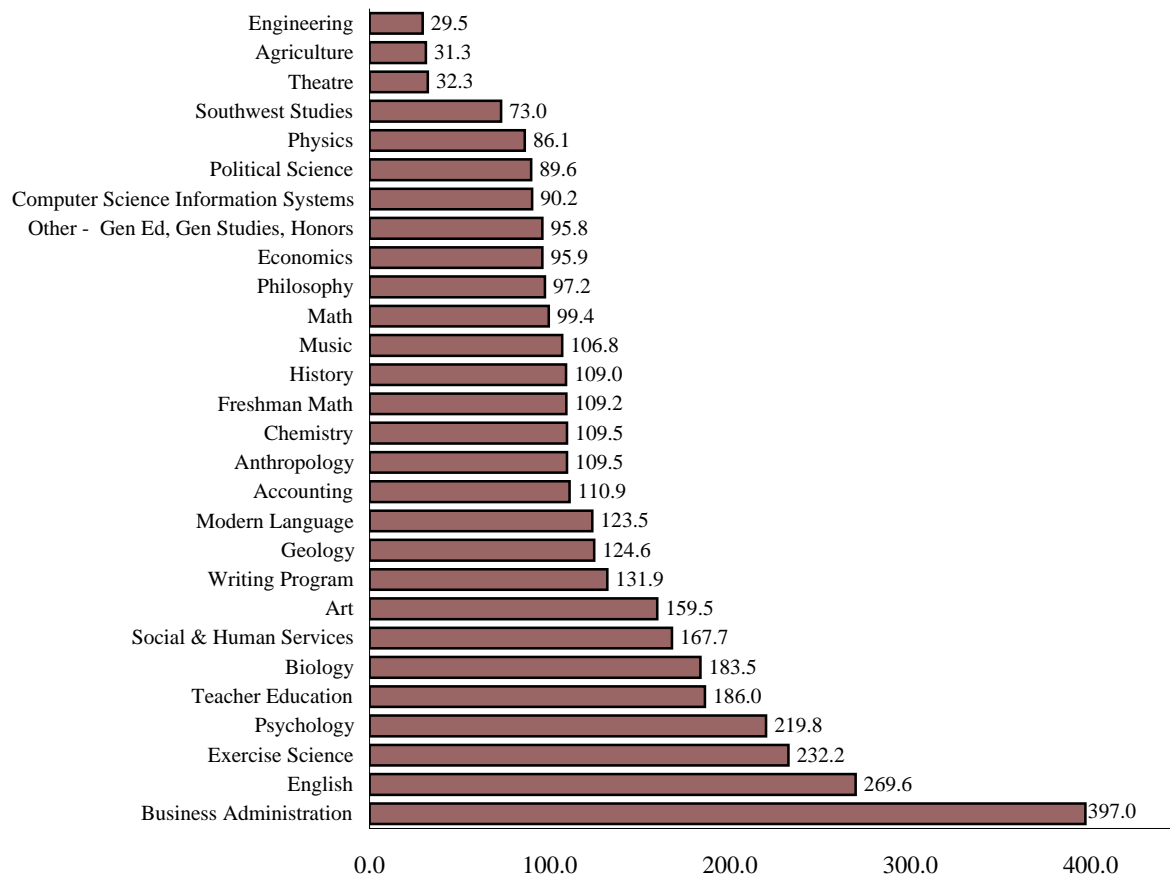


Student Full-Time Equivalent

Student FTE by School - FY 05-06

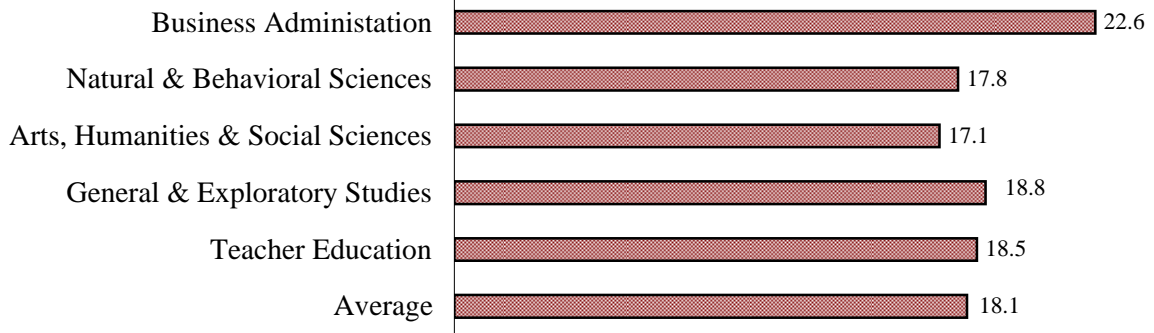


Student FTE Production by Discipline ~ FY 05-06

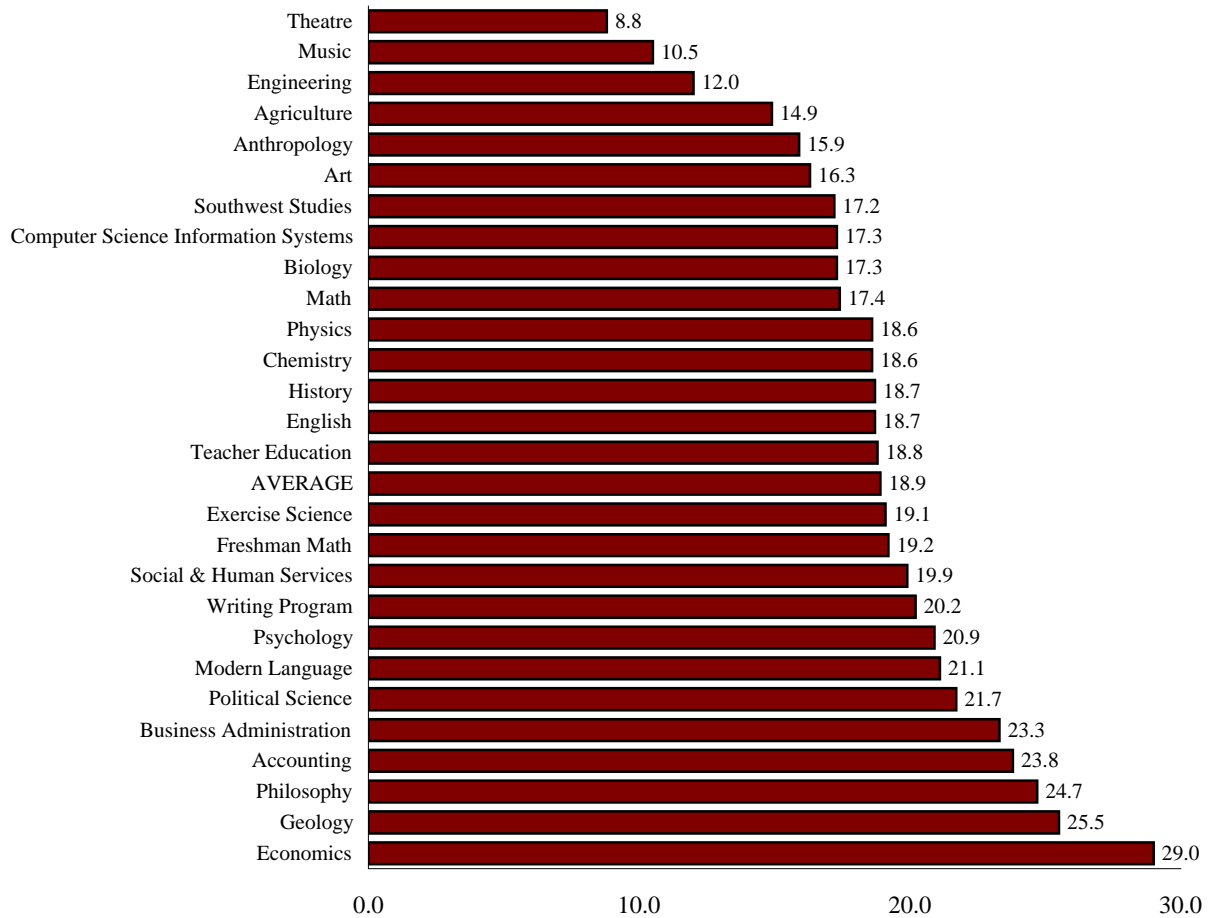


Student Faculty Ratio

Student Faculty Ratio by School - FY 05-06

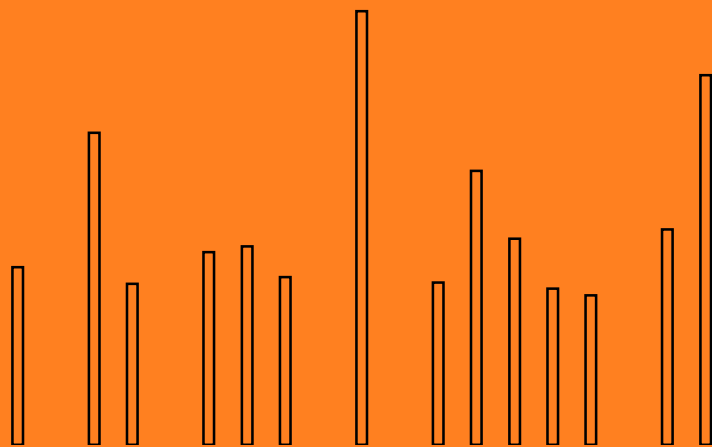


Student-Faculty Ratio by Discipline ~ FY 05-06



Faculty by Gender

	<u>FY 99-00</u>	<u>FY 05-06</u>	<u>% Change</u>
Total Male Faculty	101	100	-1.0%
Total Female Faculty	71	86	21.1%
Total Faculty	172	186	8.1%



Appendix ~ Sources of Information

Financial Information

Education & General Revenue Sources ~ Actual

Statement of Revenues, Expenditures, and Other Changes

Education & General Expenditures ~ Actual

Annual year-end Statement of Current Funds Revenues, Expenditures, and Other Changes (excluding compensated absence expense)

Native American Tuition Waivers and Headcount

Headcount ~ Enrollment Summary Report prepared by Records Office

Tuition Waivers ~ Final Budget Status report

Tuition Rates ~ Ten-Year History ~ Fort Lewis College Tuition and Fees schedules

Change in CPI ~ Calculated using data from Bureau of Labor Statistics

Tuition Rates ~ Comparison with Selected Colorado Institutions ~ CCHE Tuition and Fee Reports

Mandatory Student Fees ~ Ten-Year History ~ Fort Lewis College Tuition and Fees schedules

Mandatory Student Fees ~ Comparison with Selected Colorado Institutions ~ CCHE Tuition and Fee Reports

Mandatory Student Fees Revenue ~ Five-Year History

Final Budget Status report through FY 04-05 and Original Operating Budget for FY 05-06

Room and Board Rates ~ Ten-Year History ~ Fort Lewis College Tuition and Fees schedules

Change in CPI ~ Calculated using data from Bureau of Labor Statistics

Room and Board Rates ~ Comparison with Selected Colorado Institutions ~ CCHE Tuition and Fee Report

Grant Activity ~ Institutional Trends Report

Indirect Cost Recoveries ~ Final Budget Status Reports

Student Information

Fall Headcount and Fiscal Year Full-Time Equivalent (FTE) and Fiscal Year FTE Trends by Residency ~

Data reported in accordance with the Colorado Commission on Higher Education (CCHE) Policy for Reporting Full-Time Equivalent Student Enrollment

Student Residency by State, Students by Ethnic Origin, Freshman Retention and Graduation Rates ~

Office of Institutional Research, Fall 2005

Staffing Information

Education and General Salary Distribution History ~ Fort Lewis College Staffing Patterns

Faculty Salary Increases Compared to Consumer Price Index

Faculty Salary Percentage Increase ~ Academe data reported by Fort Lewis College

Change in CPI ~ Calculated using data from Bureau of Labor Statistics

Faculty Full-Time Equivalent, Student Faculty Ratio

Student Faculty Ratios are reported based on CCHE guidelines utilizing CIP discipline categories. The data contained in the Data Book differs as follows: (1) The data are presented based on the departments reporting to each dean within three schools, (2) For this report Faculty and Student FTE are accounted for in the faculty member's home department, and (3) The data do not contain information relating to COOP Education or to Library. Faculty FTE data do not count academic administrators who teach classes nor medical replacement positions but do include sabbatical replacement and adds back release time approved. Student FTE data do not include student credit hours generated from remedial courses. These actions are consistent with CCHE reporting requirements.

Faculty by Gender and Rank ~ Five-Year Comparison ~ Academe data reported by Fort Lewis College

The Delaware Study ~ Data obtained from completion of study workpapers and from the University of Delaware