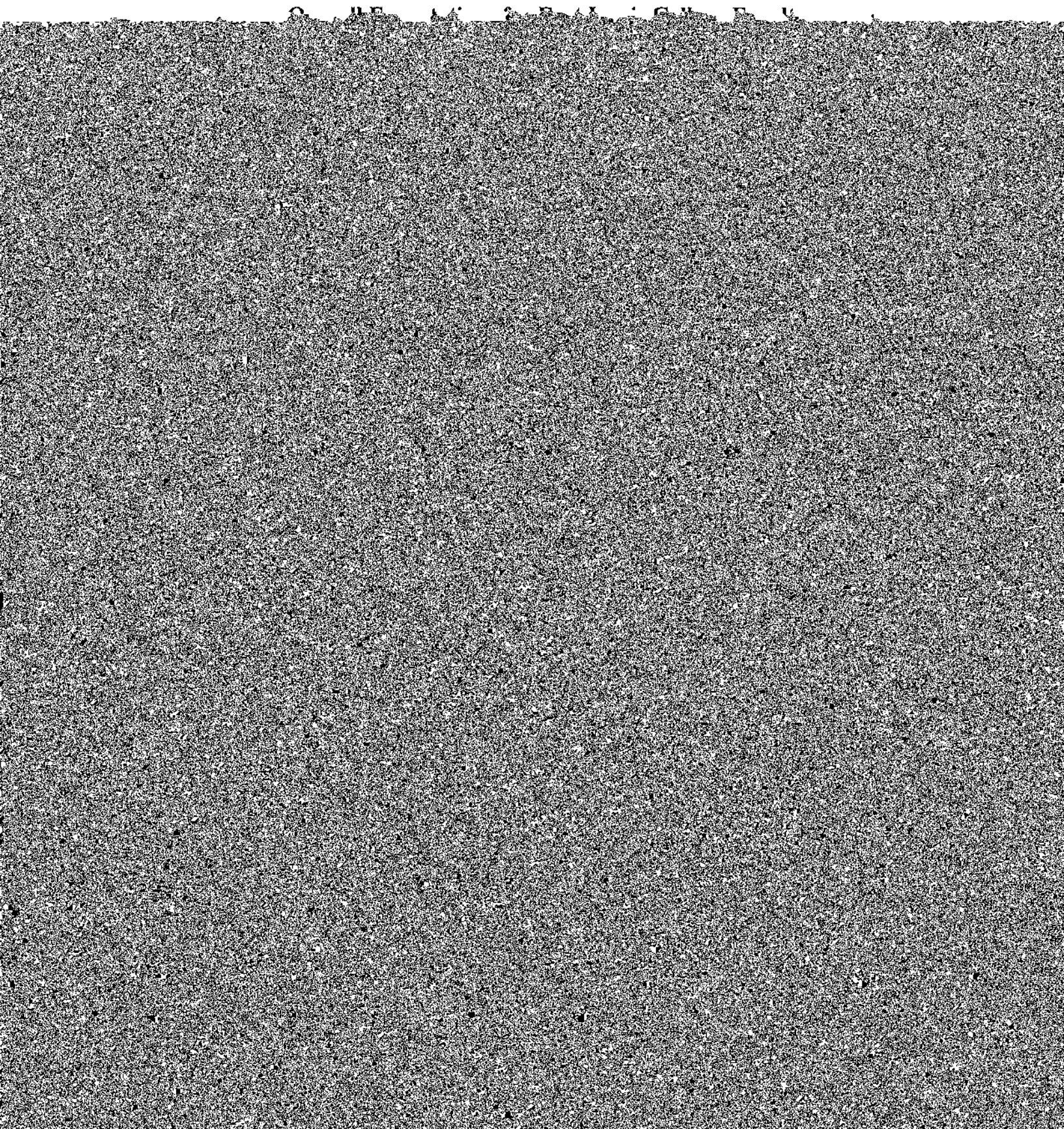


Teacher Education



a) effective teaching and the promise of continued progress toward meeting the standards for promotion to Associate Professor. The rank of Assistant Professor can

teaching represented by the rank of Assistant Professor. To merit promotion to Associate Professor, faculty members must show that they have become

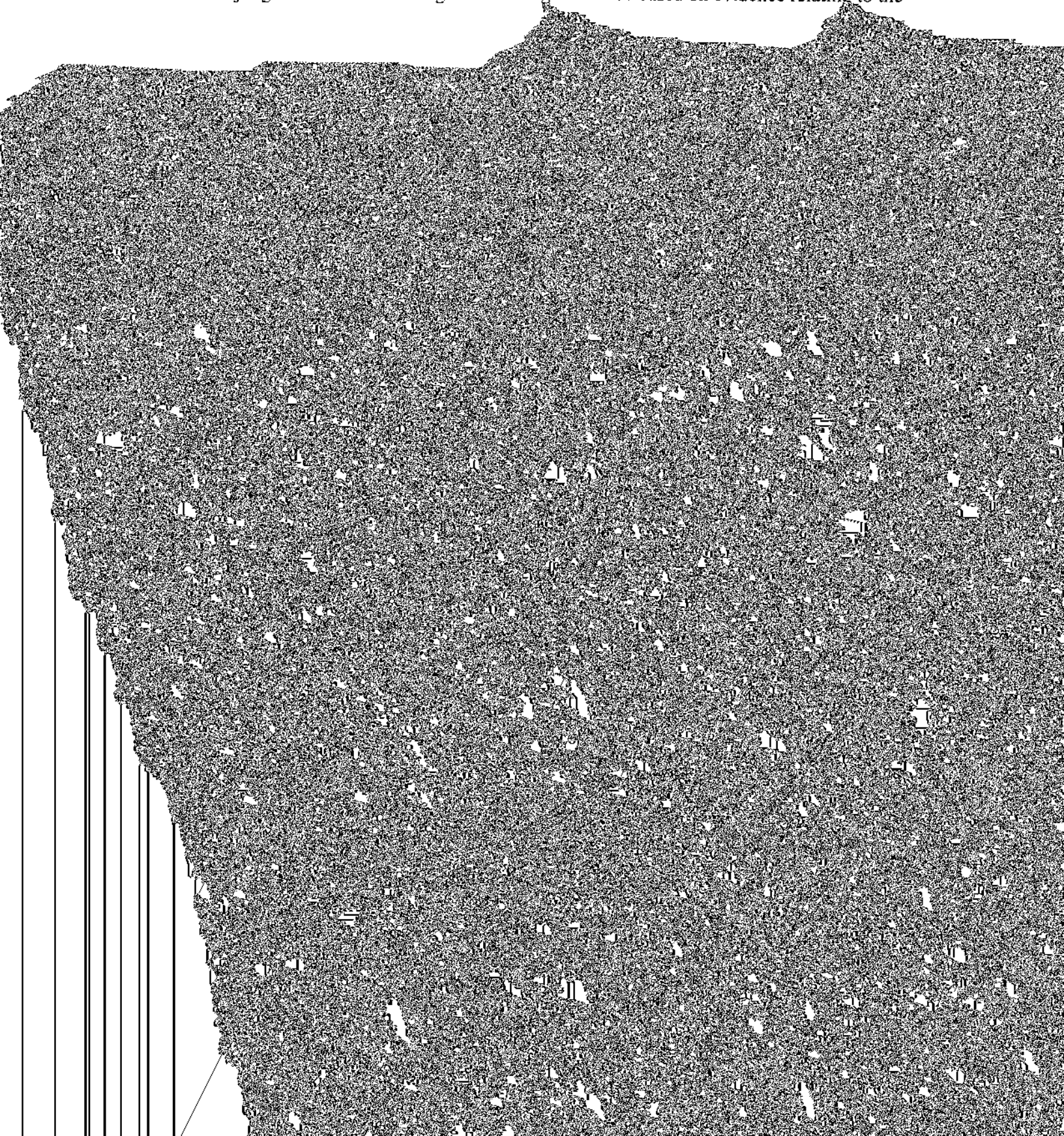
The College expects members of the faculty to fulfill their responsibilities as teachers by facilitating the intellectual or artistic development of their students in scheduled courses and in other contexts (e.g., through independent studies, informal disciplinary and cross-disciplinary

careful selection of course content, sequencing of learning experiences, identification and development of effective course materials, and crafting of laboratory exercises, individual

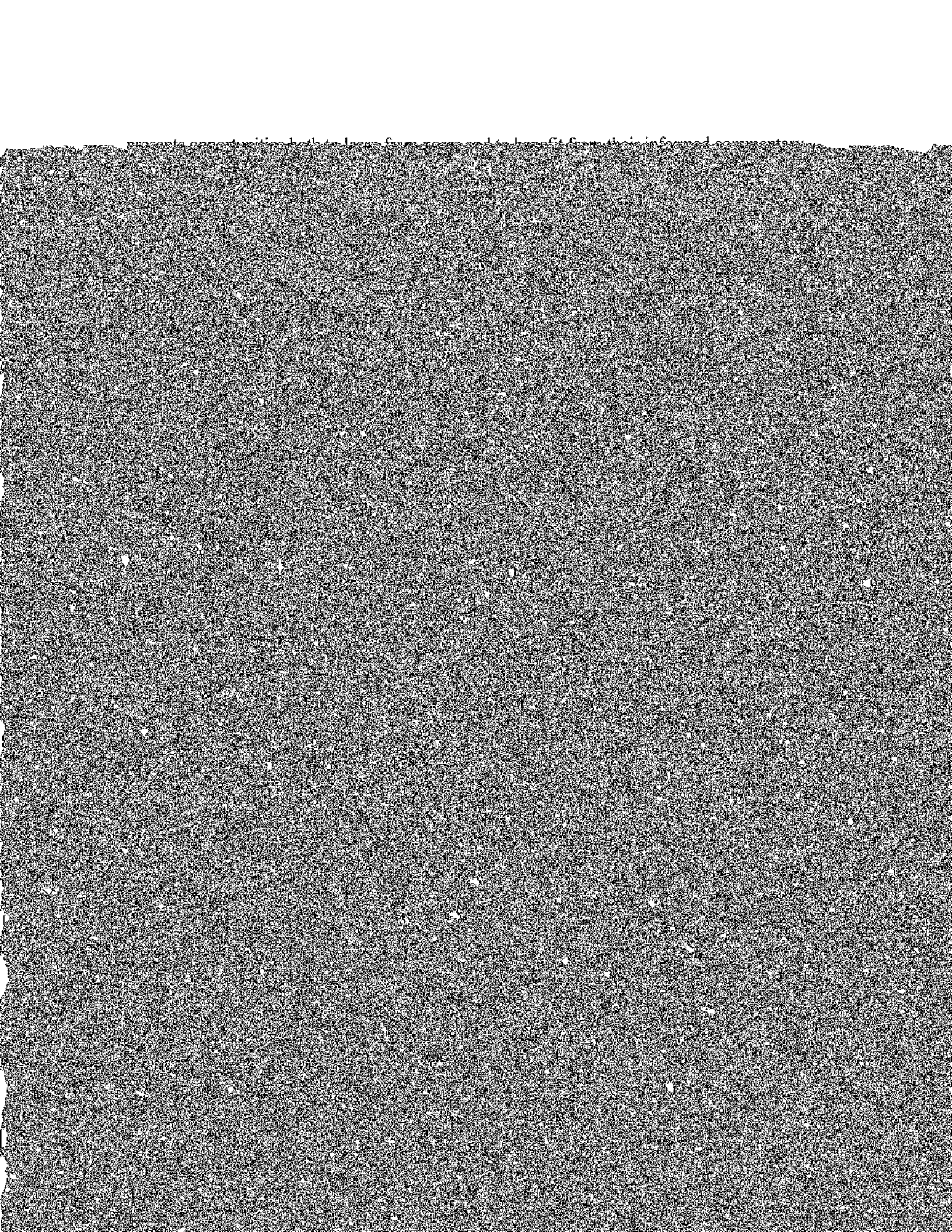
learning.

Evaluation of teaching in faculty review

Informed judgments about a colleague's teaching should be based on evidence relating to the



the diversity of our faculty, there are many appropriate ways for faculty members to fulfill the expectation that they remain actively engaged with their fields. Specifically, the College endorses the view that research or creative activity—whether it is individual or collaborative—may originate in any of the four ways described in the report *Scholarship Reconsidered*¹ and summarized below. These broad categories of research and creative activity are not mutually exclusive or



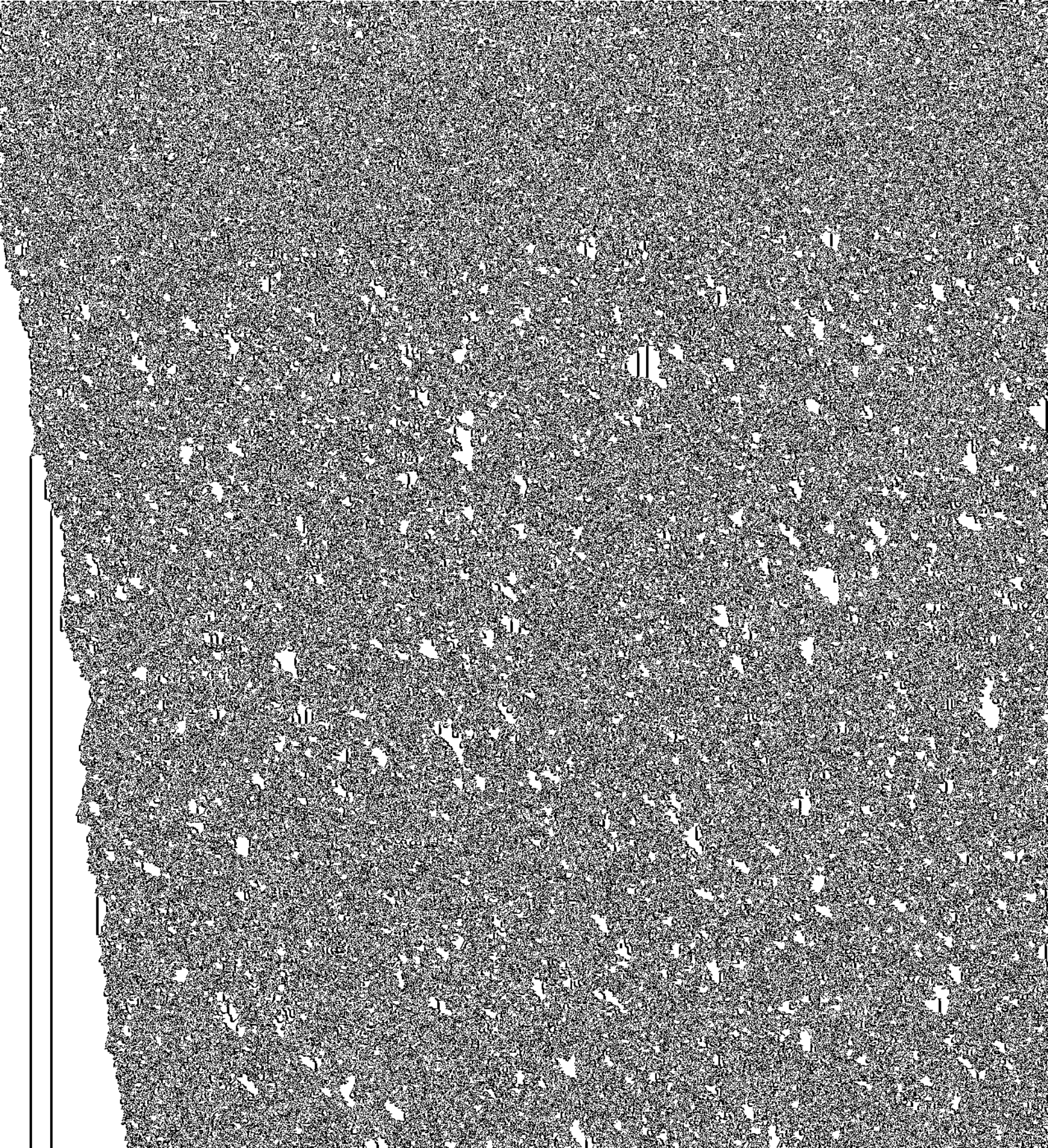
about whether a show was juried), slides of art works,
• offprints or copies of published reviews, articles, or books.

▼ Published books or chapters or manuscripts in preparation or under consideration for

responsibility for its quality. They also assure the quality of instruction the College provides to its students, support one another's scholarly or creative work, and maintain a College-wide

time members of the faculty will be called upon to participate in the evaluation and revision of curricula and academic programs. Faculty members also formulate the academic

This area of service encompasses the various forms of shared work that are particular to academic departments, schools, and programs. Such work is both ongoing (e.g., attending department meetings, managing budgets, sponsoring a student organization, directing



Department Expectation Statement Approval Page

The attached departmental expectations have been approved through June 2019.*

Michael

11/16/11

Department Chair Signature

